

# SUSAN OGILVIE

## Workshop:(6-Nights)-(5-Paint Days) Farm & Coast Pastel Workshop & Retreat

Join us for this wonderful opportunity to paint landscapes with Susan in Rhode Island's beautiful Sakonnet Point. Susan is a widely recognized, published pastel artist and teacher. Part en plein air and part in studio, this workshop allows for the best of both. From our waterside lodging location, we'll have access to sea, dunes, farm and marsh scenes. This workshop will focus on creating light, using the temperature of color to create more believable natural light, minimizing detail, and executing more effective composition. These are the elements of painting that Susan has found to be invaluable tools, and motivate artistic growth. You'll also learn Susan's signature techniques for developing handmade pastel painting surfaces.

**SPECIAL NOTE:** This a small-group workshop allowing for generous at easel attention with Susan.

### **September 2019 Package for 5-Day Painting Workshop (6-nights) Retreat**

**Sakonnet Point Lodging:** Arrive Sunday, September 22 and Depart Saturday, September 28<sup>th</sup> 2019

**Paint:** [September 23, 24, 25, 26, 27, 2019](#) || [Mon, Tues, Wed, Thurs, Friday](#)

---

**Paint and Stay** in Coastal & Historic Sakonnet Point, Little Compton, RI

Farms, dramatic granite cliffs with long stretches of sand, swales, dunes, and marshes.

Spacious and Historic 6-Bedroom Cottage steps from the Sakonnet Harbor. [Workshop Lodging Link](#) [sauleri.com](#)

---

Single occupancy 6 nights  
|Tuition Only Rate

\$1370-1570 (includes tuition) Twin, Queen or King  
\$ 695 \* students provide their own housing

### **5-Day Workshop Package includes:**

Tuition for 5 full class days, 6 nights of lodging, breakfast basics stocked in a shared kitchen cottage, unlimited coffee and tea, and welcoming wine and cheese reception.

### **How To Enroll**

Enrollment is accepted in the order in which they are received. Upon receipt of your deposit, you are sent a supply list provided by your instructor, detailed lodging & travel information, and a confirmation/invoice. Remaining balance due August 23 prior to arrival. Payment may be made by, personal check, or credit card (3.5% processing fee applies). When double occupancy enrollments are made separately, they are confirmed only when a deposit has been received from both students.

### **Cancellation Policy**

Bow House Studio reserves the right to cancel any workshop due to low enrollment without incurring obligations. Workshop deposits are applied as a pre-payment of tuition, accommodations, and catering.

All student cancellations must be made in writing. Cancellations received prior to Aug. 10 receive a full refund less \$100 cancellation fee. If you cancel after Aug. 10<sup>th</sup>, your deposit is non-refundable, unless another artist can be found to fill your space.

**Please register early!**

Gifted with a generous and spirited teaching style, Susan shares her passion for painting. *"It's all about letting go, discovering something exciting, and enjoying the ride. I act as the safety net!"*

# Rare Farm and Coast Painting Retreat!

DATE: \_\_\_\_\_

NAME: \_\_\_\_\_

EMAIL: \_\_\_\_\_

ADDRESS: \_\_\_\_\_

STATE/CITY/ZIP: \_\_\_\_\_

CELL / PHONE: \_\_\_\_\_

ROOM PREFERENCE: Single Twins, Single Queen, Single King, Shared or Single Occupancy for Large Rooms

[www.sauleri.com](http://www.sauleri.com)

## How To Enroll

Mail your deposit of \$500 per person:

You may also enroll over the phone using a credit card for the deposit. 3.5% processing fee applies.

Hosted by [Kelly Milukas](#),

Bow House Studio

355 Neck Road, Tiverton, RI 02878

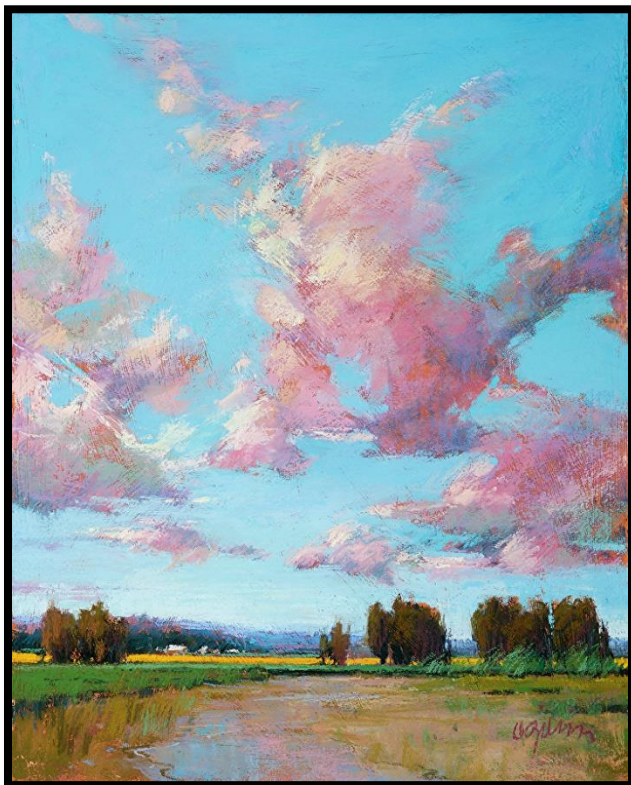
telephone: 401.480.3536

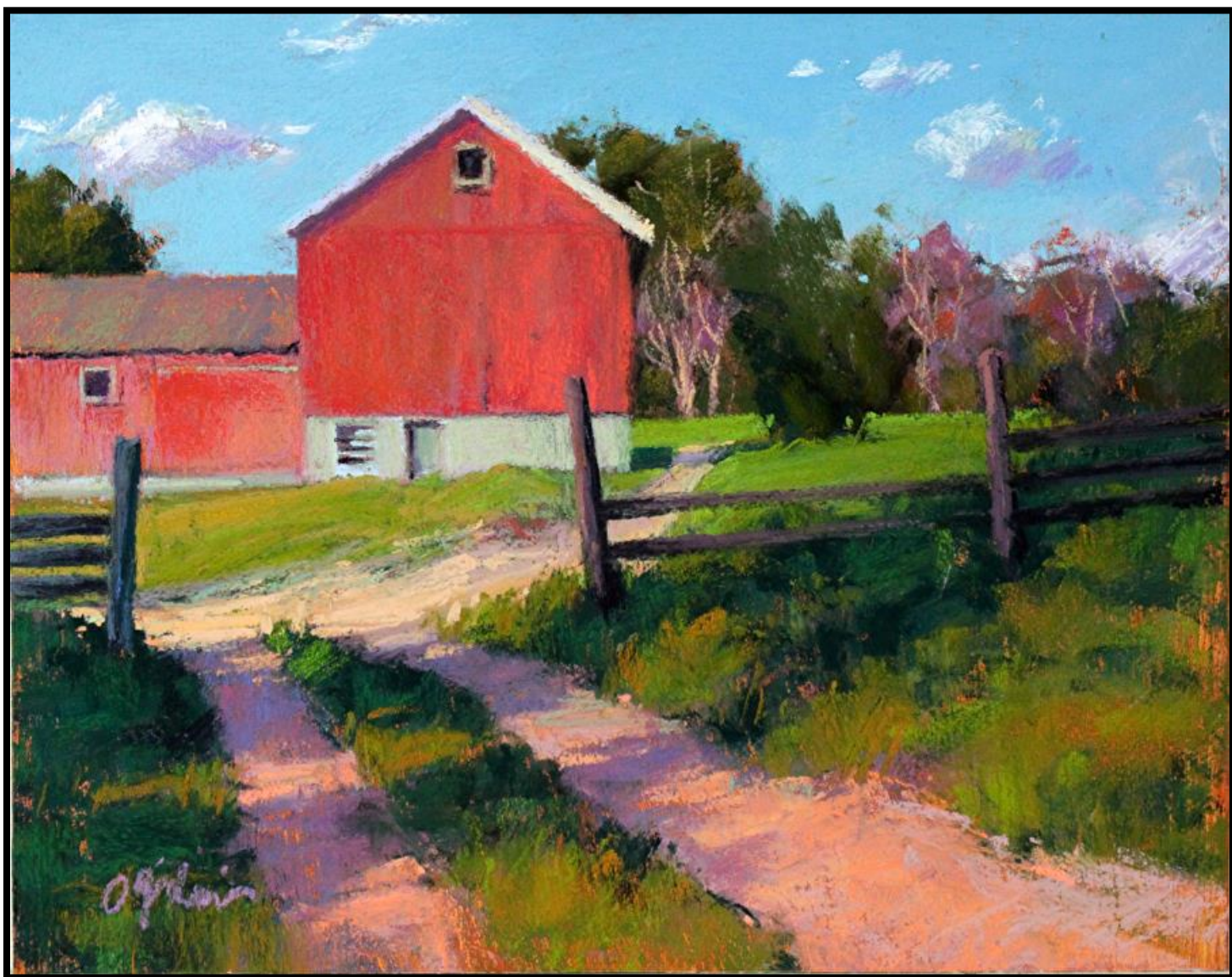
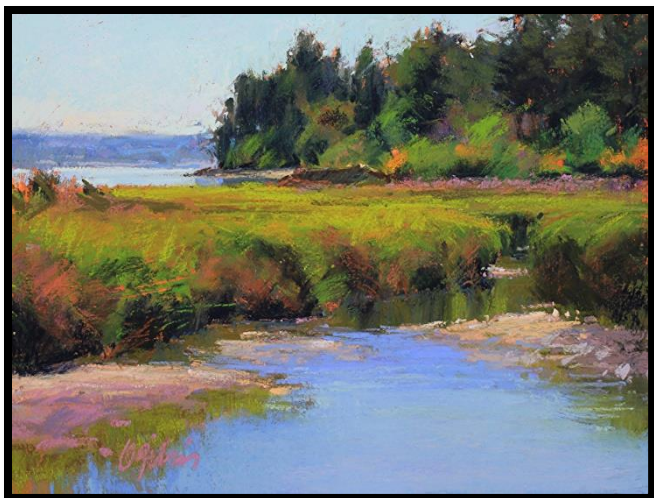
email: [kellymilukas@gmail.com](mailto:kellymilukas@gmail.com)



## Susan Ogilvie: Landscapes in Pastel Workshop & Retreat

**Sakonnet Point Lodging:** Arrive Sunday, September 22 and Depart Saturday, September 28<sup>th</sup> 2019





**SUSAN OGILVIE**

Landscapes in Pastel: Color and Composition

# SUSAN OGILVIE, PSA

Host: Kelly Milukas, Bow House Studio, Tiverton and Little Compton, RI

## 2019 MATERIALS LIST FOR PASTELS

### **PASTELS:**

I recommend a sufficient range of values within the **6 main hues: red, yellow, blue, orange, green, and violet**. Within each hue, having a variety of warm and cool, neutral and saturated versions of these colors, is ideal. Try sorting what you have with this in mind before the workshop. If you find gaps in your resorted set, this will give you useful information about what you may need to buy. The **lightest values** should still possess a color or temperature—if they appear so pale as to not register a color, then leave them at home. Also bring a few very dark values of warm and cool green, violet, and brown. The pastel brands I prefer are Unison, Schmincke, Blue Earth, and Sennelier—high quality and very soft.

### **SUPPORT SIZES:**

8x10, 9x12, and/or 11x14. (You will probably use 2 per day).

### **SKETCHBOOK AND PENCIL:**

Sketchbook (8x10 or 9x12)

Soft drawing pencil, ink, eraser...whatever you prefer for compositional drawing.

Grey value markers (optional)

### **MISCELLANEOUS:**

**Portable Easel**

**Paper Towels / Moist Wipes**

**Portable chair**

**Umbrella** (optional)

**WAIVER OF LIABILITY:** By submitting a deposit, the named participant, on behalf of himself or herself, and all agents, employees, assignees, administrators, or executors, hereby releases, discharges, and waives all claims of liability against Bow House Studio, Imagination Collaboration, LLC, Kelly Milukas or her employees for any injuries, damages, or loss of any kind that might be sustained while participating in Kelly Milukas' Workshops, or for any health condition, new or preexisting, that might develop or be affected or aggravated as a result of participation.

We cannot reduce or waive these terms in the event of circumstances beyond our control such as illness, flight cancellations, war, terrorist attacks, injury or death, natural disaster, or force majeure. If any sentence of this agreement is held invalid, it is agreed that the balance thereof shall continue in full legal force and effect.

## Rare Farm and Coast Painting Retreat!

### **September 2019 Package for 5-Day Painting Workshop (6-Nights) Retreat**

DATE: \_\_\_\_\_

NAME: \_\_\_\_\_

SIGNATURE: \_\_\_\_\_



saulè ~ house of the sun

Sakonnet Point LC, RI

[www.sauleri.com](http://www.sauleri.com)

